

MORICO®

LASER CARTON MARKING SYSTEM

LC-2/LC4



LC Series can automatically separate and feed the stacked cartons one by one to imprint various 2D Code/Barcode and Lot No. etc. by Laser Printer, and check the print.

If the checking system detects a wrong product or unclear print, LC discharges such products (NGs) or stops operation and notifies by red flasher and beep.

LC-2 SPECIFICATION

Equipment Configuration

Carton Transporting Unit

- Feeding Section (Side feed, No interlock switch on the door)
- Separating Section (Reverse Roller Method)
- Transport Section (Intermittent Transport by Rollers)
- Operation Section, Touch Panel (with Pre-set Counter)
- Interlocking Maintenance Doors (transparent polycarbonate plastic)
- Receiving Tray (SUS) (Chute Discharge)
- Cabinet (Aluminum frame, Cover SUS HL)
- Red Flasher (2 units, with beep, detachable)
- Adjustable Casters

Laser Marker 【SUNX or KEYENCE】

(Print Area 110mm×110mm)

Console SUNX ADP40

Laser Position Adjuster (up/down, right/left) with handle, digital position Indicator

Print Checking System 【Central CV-1000 or Micro-Technica TFO】

Camera and Lighting is installed on Laser Position Adjuster

Dust Collector 【Amano VF-5HN】

Pedestal style with caster

Carton Size

Minimum: W60mm × L70mm, thickness 1mm

Maximum; W320mm × L485mm, thickness 6mm

Type of Cartons

Both-end Flap Cartons, One-touch Cartons

Capacity

Regular Mode Transport (Approx.1sec) + Imprinting + Print Check

= approx. 30 pcs/minute or more (Postcard size)

Low Speed Mode Transport (Approx.2sec) + Imprinting + Print Check

= approx. 15 pcs/minute or more (Postcard size)

*Capacity differs depending on the print size.

Print Position Accuracy

Forward/backward accuracy against the flow: ± 1 mm

Right/left accuracy against the flow: ± 0.5 mm (Due to Side Plate setting.)

Feeding Section

Roller Sliding Feeder

Stacking Capacity – 2mm thick cartons approx. 30pcs, 6mm thick cartons approx. 10pcs.

*Cartons can be added on the stack without stopping the operation. Feeder section door is not interlocked.

Operation Section

Touch Panel (Mitsubishi Electric)

Regular Mode	Print ○	Check ○
Low Speed Mode	Print ○	Check ○
Check Mode (Regular Speed)	Print ×	Check ○
Check Mode (Low Speed)	Print ×	Check ○
Maintenance Mode(NG Discharge, etc.)	Print ×	Check ×

Pre-set Counter

Total Counter

Total Counter (w/ Reset Switch)

OK Counter (w/ Reset Switch)

NG Counter (w/Reset Switch)

Emergency Stop Button

Control Section

Sequencer (Mitsubishi Electric)

Discharging Section

Chute Discharge

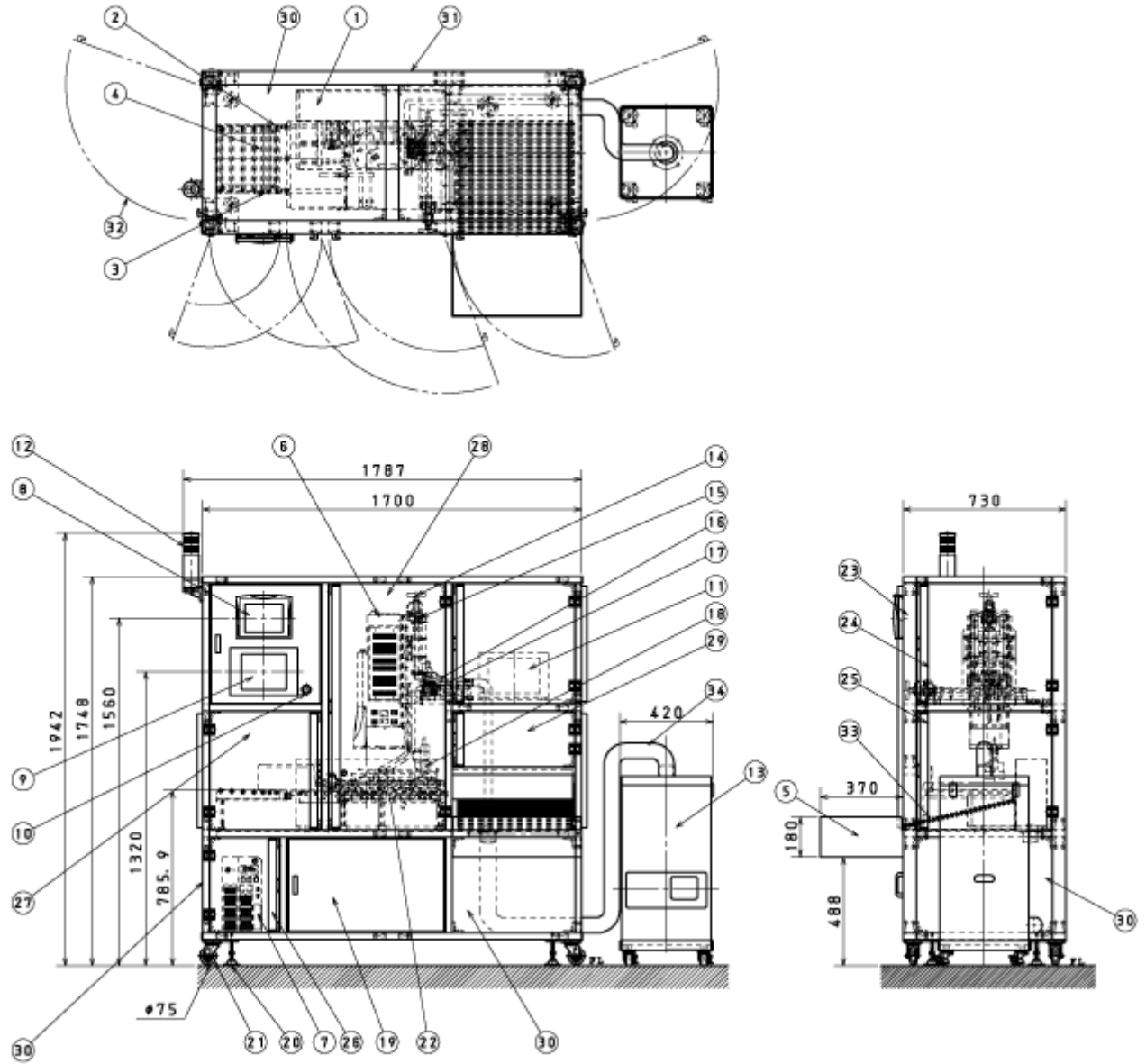
Detachable Receiving Tray (USU)

Power Supply

Power Plug, Power Cord: Earth connection 2P Rubber Plug, Cord 3m

Outlet: AC100V 2P Outlet with Earth connection, 15A or more, AC200V spec is available.

Appearance

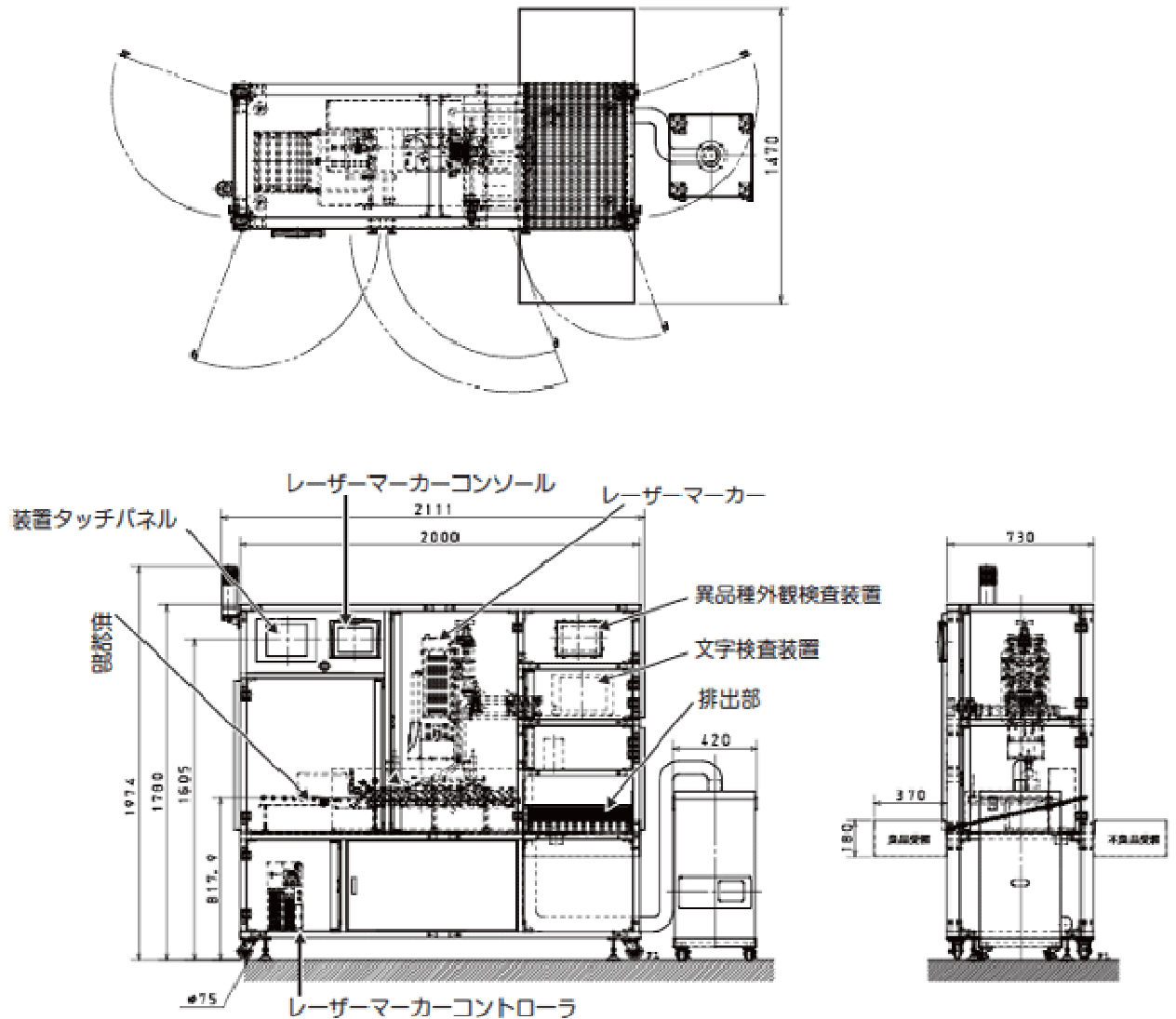


NO.	Description	NO.	Description
1	Carton Transport	18	Print Checking Camera, w/ strobe light
2	Guide (L)	19	Control Box
3	Guide (R)	20	Adjuster
4	Sliding Feed Plate	21	Caster $\phi 75$
5	Detachable Receiving Tray (SUS)	22	Dust Collector Suction Opening

6	CO2 Laser Marker LP-430TU	23	Cabinet Frame (Aluminum 30×60)
7	CO2 Laser Controller	24	Maintenance Door (Interlock, polycarbonate plastic)
8	CO2 Laser Console LP-ADP40	25	Maintenance Door (Interlock, polycarbonate plastic)
9	Touch Panel	26	Maintenance Door (No Interlock, polycarbonate plastic)
10	Emergency Stop Button	27	Maintenance Door (Interlock, polycarbonate plastic)
11	Print Checking System CV-1000	28	Maintenance Door (Interlock, polycarbonate plastic)
12	Red Flasher (2 lights, Beep, Detachable)	29	Maintenance Door (Interlock, polycarbonate plastic)
13	Dust Collector VF-5HN	30	Panel (SUS HL)
14	Handle to adjust Laser Head (Up/Down)	31	Panel (SUS HL)
15	Digital Position Indicator (Up/Down Adjustment)	32	Feeder Section Door (No Interlock, polycarbonate plastic)
16	Handle to adjust Laser Head (R/L)	33	Discharge Chute
17	Digital Position Indicator (Right/Left Adjustment)	34	Dust Collector Hose Pipe φ65

LC-4 SPECIFICATION

LC-4 is a high-end model with Vision System (Keyence Visual Sensor) to detect wrong products and unclear prints (NGs), and NG Discharger.



Feel Free to contact us to design your custom-made configuration.



MORICO CO., LTD.

HEAD OFFICE: 2-16-14 Meguro-Honcho, Meguro-Ku, Tokyo 152-0002 JAPAN

TEL: +81-3-3711-5511 FAX: +81-3-3711-5517 E-MAIL: info@morico.co.jp